


CORRECTION

Open Access



# Correction to: Impact of resettlement scheme on vegetation cover and its implications on conservation in Chewaka district of Ethiopia

Alemayehu Abera<sup>1\*</sup> , Teshome Yirgu<sup>2</sup> and Abera Uncha<sup>2</sup>

**Correction to:** *Environ Syst Res* (2020) 9:2

<https://doi.org/10.1186/s40068-020-00164-7>

Unfortunately, in the original version of this article (Abera et al. 2020) figure 5 was repeated in Fig. 4.

The corrected Fig. 4 is given below. The original article has been corrected.

---

The original article can be found online at <https://doi.org/10.1186/s40068-020-00164-7>.

---

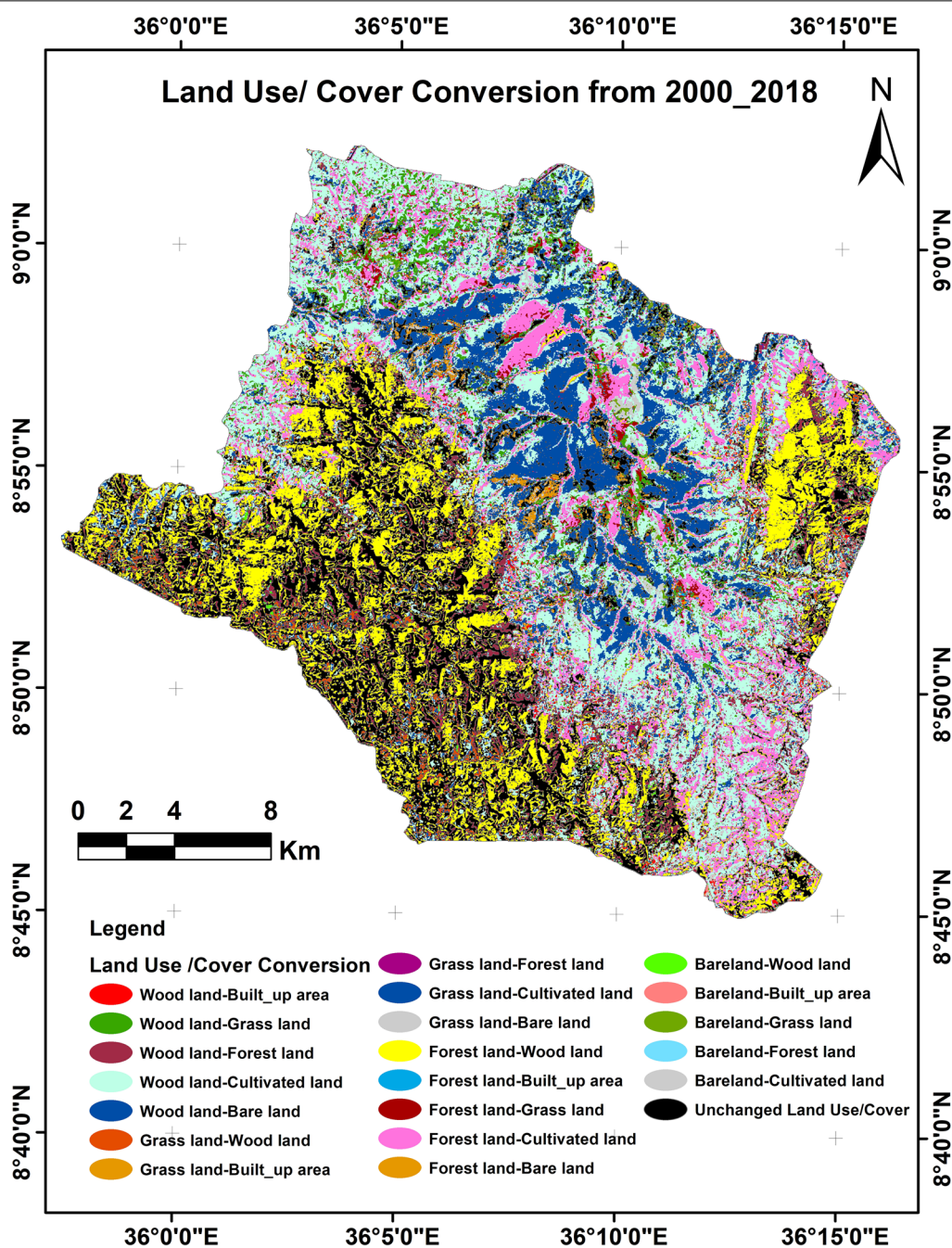
\*Correspondence: [alemayehuabera21@yahoo.com](mailto:alemayehuabera21@yahoo.com)

<sup>1</sup> Department of Geography and Environmental Studies, Mettu University, P.O. Box 318, Mettu, Ethiopia

Full list of author information is available at the end of the article



© The Author(s) 2020. This article is licensed under a Creative Commons Attribution 4.0 International License, which permits use, sharing, adaptation, distribution and reproduction in any medium or format, as long as you give appropriate credit to the original author(s) and the source, provide a link to the Creative Commons licence, and indicate if changes were made. The images or other third party material in this article are included in the article's Creative Commons licence, unless indicated otherwise in a credit line to the material. If material is not included in the article's Creative Commons licence and your intended use is not permitted by statutory regulation or exceeds the permitted use, you will need to obtain permission directly from the copyright holder. To view a copy of this licence, visit <http://creativecommons.org/licenses/by/4.0/>.



**Fig. 4** Land use/cover change map of Chewaka district (2000–2018)

#### Author details

<sup>1</sup> Department of Geography and Environmental Studies, Mettu University, P.O. Box 318, Mettu, Ethiopia. <sup>2</sup> Department of Geography and Environmental Studies, Arba Minch University, P.O. Box 21, Arba Minch, Ethiopia.

#### Reference

Abera A, Yirgu T, Uncha A (2020) Impact of resettlement scheme on vegetation cover and its implications on conservation in Chewaka district of Ethiopia. *Environ Syst Res*. <https://doi.org/10.1186/s40068-020-00164-7>

Published online: 06 March 2020

#### Publisher's Note

Springer Nature remains neutral with regard to jurisdictional claims in published maps and institutional affiliations.